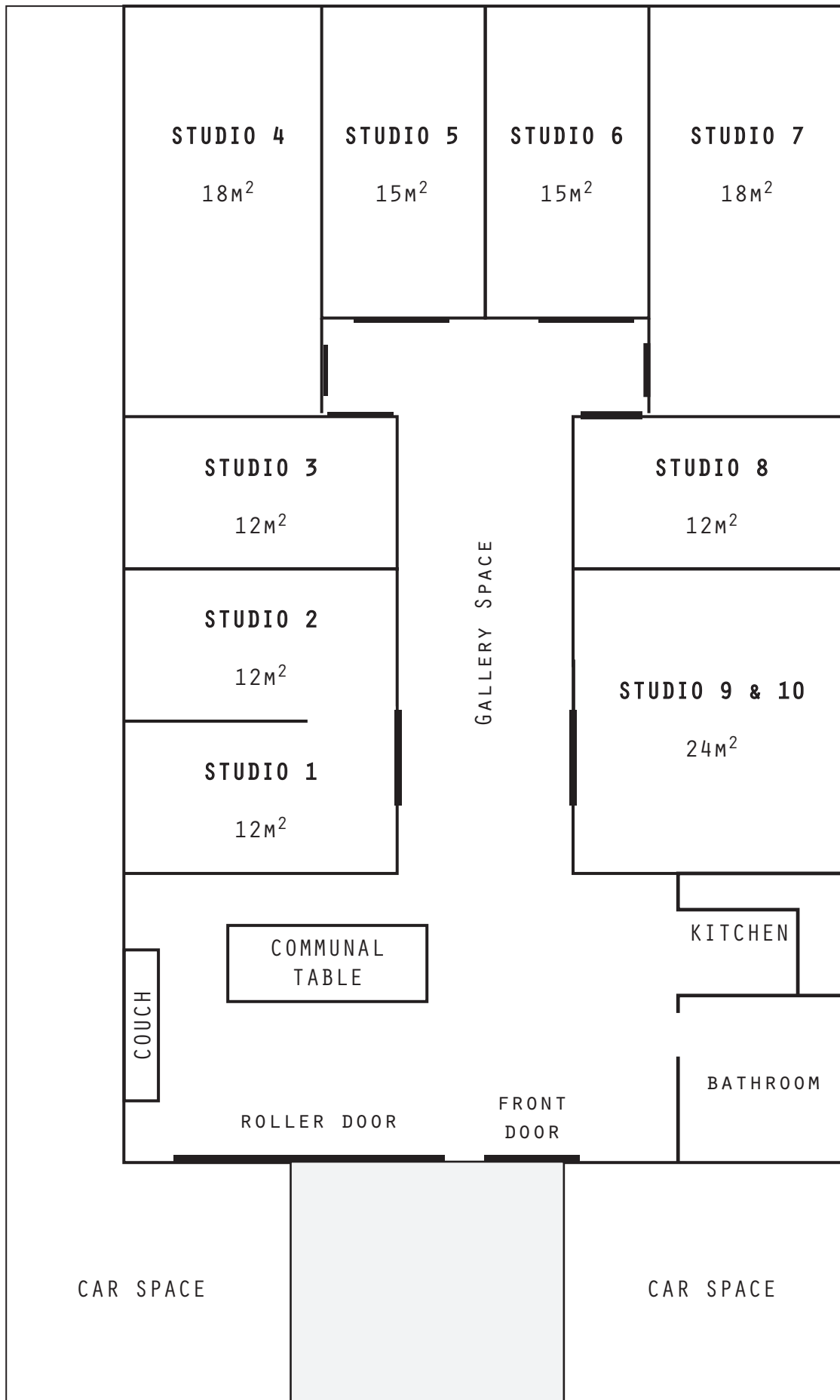


# FLOOR PLAN & STUDIO DIMENSIONS



## SMALL STUDIOS

Studios 1, 2, 3 and 8 are standard size studios with a comfortable working space and an abundance of natural light. Studio 3 also features a ceiling.

All studios have lockable doors.

Measuring at 12m<sup>2</sup> with dimensions of 2.4m x 4.6m.

## MEDIUM STUDIOS

Studios 5 and 6 both feature ceilings whilst still letting through the natural lighting.

Both studios have lockable doors.

Measuring at 15m<sup>2</sup> with dimensions of 3m x 5m.

## LARGE STUDIOS

Studios 4 & 7 are long and narrow with a spacious amount of room.

The sky roof above studio 7 allows for a substantial amount of natural light to enter the room whilst studio 4 features a ceiling.

Both studios have lockable doors.

Measuring at 18m<sup>2</sup> with dimensions of 3m x 6m.

Studios 9 & 10 are the biggest studios at The Factory and have an open roof ceiling to capture the natural light on offer.

Measuring at 24m<sup>2</sup> with dimensions of 5m x 4.6m.

Also features a lockable barn style sliding door.

## GALLERY SPACE

The large gallery space includes hanging tracks for your convenience.

## COMMUNAL SPACE

Kitchenette use is equipped with all necessary utensils, microwave, kettle, fridge and storage.